



**CORPORATE HEAD OFFICE**

**Sondhi Industries**

C-9 & C-11, Canal Road, Near Canara Bank,  
Industrial Area, Jalandhar - 144004. (INDIA)  
0181-5082162, 5082165, 5015378  
98780-48072, 94172-87030  
sirvalve@gmail.com

**WORKS (UNIT1)**

**S. S. Industries**

D108 & 109 Focal Point Extension,  
Jalandhar, Punjab 144004 (INDIA)  
+91-181-5015378, +91-181-5082172/75  
sales@sirvalve.com

**WORKS (UNIT2)**

**S. S. Industries**

C-18 Focal Point Extension,  
Jalandhar, Punjab 144004 (INDIA)  
+91-181-5015378, +91-181-5082172/75  
sales@sirvalve.com

**AUSTRALIAN OFFICE**

**SIR Australia Pty Ltd.**

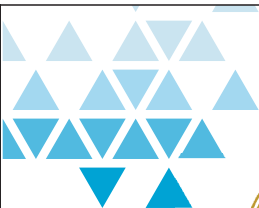
32 Colbert Road, Campbellfield,  
Victoria (Australia) 3061  
+61-420648565  
Toll Free: 1-800-613-426

**REGIONAL SALES OFFICE**

**Sondhi Sales Corporation**

Shanker Market, Hauz Qazi,  
New Delhi (INDIA) 110006  
+91-011-23272519, +91 93122 73585

**www.sirvalve.com**



An ISO 9001:2015 Certified Company



**Where Precision Matters**

**PRODUCT CATALOGUE**



Butterfly Valve



Dual Plate Check Valve



Balancing Valve



Sluice Valve



Resilient Gate Valve



Strainer ('Y' Type)



Wafer Check Valve

# Driving Change for Greener Environment

'SIR' believes that preserving our environment and saving water for our future generations, is one of our biggest responsibility. We are committed towards developing a more sustainable environment across our organization.



- SIR adheres to the ISO 14001 essentials
- Our casting units are set up which puts petite tinge on the surroundings. Our pollution devices are properly maintained, operated & inspected by pollution control board from time to time.
- We fully understand our accountability en route for protecting environment as per the statutory regulations and legislations.
- We pay strict regard to the use of water and electricity. Where ever possible we try and reduce our CO<sub>2</sub> footprint on the environment. Planting more and more trees has been our biggest duty towards the environment.
- Hygienic and clean environment is of utmost importance within SIR. Our main focus is on safety and welfare of our employees. Timely checks on equipments are done and employees are trained to reduce any possible accidents. Medical facilities are maintained so as to timely first aid is provided in case of a mishap.

## PRODUCT RANGE

Sr No.	Product	Page No.
01	Butterfly Valve	5
02	Butterfly Valve Aluminium	6
03	Butterfly Valve Prime Model	7
04	Butterfly Valve Lugg Type	8
05	Butterfly Valve Aqualine	9
06	Butterfly Valve Gear Type	10
07	Butterfly Valve Flanged	11
08	Butterfly Valve Flanged with Gear Box	12
09	Dual Plate Check Valve	13
10	Dual Plate Check Valve Flanged	14
11	Dual Plate Check Valve Full Rubber	15
12	Dual Plate Check Valve API	16
13	Wafer Type Check Valve	17
14	Balancing Valve	18
15	Resilient Gate Valve	19
16	Landing Valve Fire Hydrant	20
17	Y-Strainer Flanged	21
18	Pot Strainer Flanged	22
19	Y-Strainer Screwed	23
20	Reflux Valve with Rubber Flap	24
21	Reflux Valve with G.M Flap	25
22	Air Valve	26
23	Air Valve Double Action	27
24	Air Valve Isolating	28
25	Air Valve Single Action	29
26	Air Valve Kinetic	30
27	Sluice Valve with Wheel	31
28	Sluice Valve Rising	32
29	Sluice Valve Cap	33
30	Ball Valve Screwed	34
31	Ball Valve Flanged	35



## Welcome to the... VALVE WORLD OF SIR

Stringent Quality Control and manufactured to precise dimensions, 'SIR' valves are the most reliable & durable valves available in the industry and a proven track record is a testimony of its precision.

### SIR - THE KEY FACTOR

We are in the business of manufacturing of Cast Iron, Cast Steel & Ductile iron Valves and D.I. fittings since 1968. We are an ISO 9001:2015 (ICI-UK) certified company. 'SIR' the brand of Sondhi Industries is committed to quality of its products. Our products are 'ISI' marked which is equivalent to British standards and their precision is proved by demonstrated track record. We also offer valves of other international standards like: AS, NZS, ISO, DIN, BS, AWWA, SABS, EN etc.

Our products are dependable and robust. The demand of these valves is mounting by the day and they are finding a place in varied markets. Our valves are feigned as per precise dimensions and our engineers work on rigorous Quality control.

We have supreme manufacturing techniques & testing facilities. All valves are subjected to mandatory checks which are, but not limited to Hydrostatic test, Pneumatic Test, steam test(on boiler) & Fire safe test (where required)

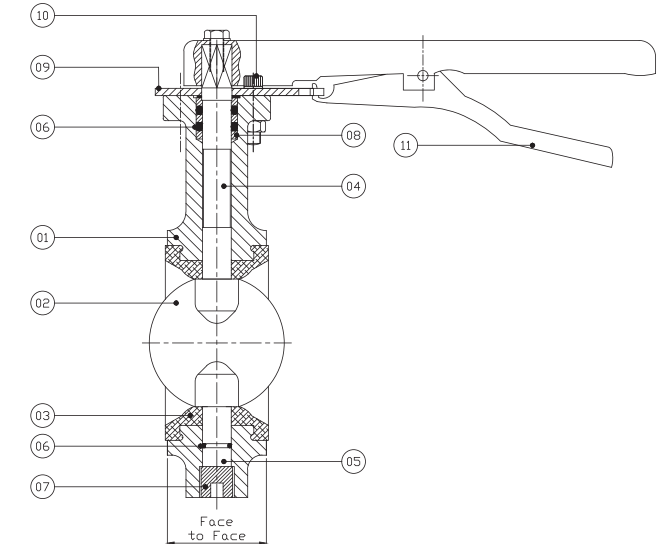
'SIR' valves are made from the premium quality of raw material and are subjected to strict & thorough quality checks. All raw materials are procured with test certificates duly attested by the manufacturers. Moreover raw material goes through internal check to maintain the strict quality we depend upon.

- Sluice Valve/Gate Valve
- Swing Type Check Valve
- Butterfly Valve
- Dual Plate Check Valve
- Wafer Type Check Valve
- Strainer (Y and T type)
- Ball Valve
- Air Valve
- Balancing Valve
- Landing Valve and more

# BUTTERFLY VALVE

## MATERIALS

S. No.	Parts	Material
01	Body	Cast Iron/S.G. Iron/DI/ Stainless Steel/WCB
02	Disc.	S.G. Iron/DI/ Stainless Steel
03	Liner	Nitrile   EPDM   Viton (High temperature)
04	Shaft	Stainless Steel
05	Ideal Shaft	Stainless Steel
06	O-Ring	Nitrile   EPDM
07	Dead Plug	Mild Steel
08	Body Bush	PTFE   Nylon
09	Notch Plate	Mild Steel
10	Nut Bolt	Galvanised Steel
11	Lever	CRCC



## HYDROSTATIC TEST PRESSURE

Availability	Size Range	Manufacturing and Pressure Rating	Temperature Rating	Hydrostatic Test Pressure	
				Body	Seat
Standard Supply	50 to 900 mm	IS:13095 PN 1.0	-10°C to 90°C	15 Kg./cm <sup>2</sup>	10 Kg./cm <sup>2</sup>
	50 to 300 mm	IS:13095 PN 1.6	-10°C to 90°C	24 Kg./cm <sup>2</sup>	16 Kg/cm <sup>2</sup>

PN 20 & PN 25 also available

## DIMENSIONS IN MM

Size	PCD	Face to Face
40	110	33
50	125	43
65	145	46
80	160	46
100	180	52
125	210	56
150	240	56
200	295	60
250	350	68
300	400	78

## DESCRIPTION

Wafer type Butterfly Valves are with an integrally moulded elastomer seat loose liner The Valves can be supplied in different combination of body, and disc material to suite a wide range of line fluids in size range of 40 mm to 900 mm. Valve suitable for Liquid, Gases etc.

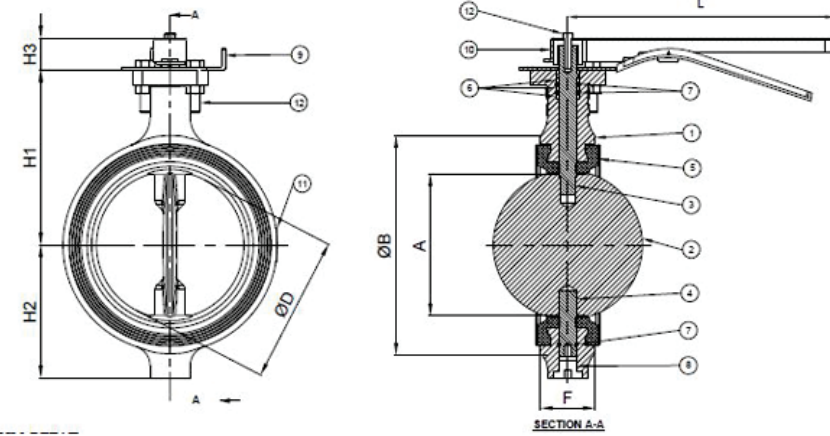
Note : Viton-Extra Cost.



# BUTTERFLY VALVE ALUMINIUM

## MATERIALS

S. No.	Parts	Material
01	Body	Aluminium
02	Disc	D.I/S.S
03	Upper Stem	ASTM A 276, Gr SS410
04	Lower Stem	ASTM A 276, Gr SS410
05	O-Ring	EPDM
06	Seat	EPDM
07	Body Bush	NYLON
08	Bottom Plug	M.S (CHROME PLATED)
09	Notch Plate	M.S (POWDER COATED)
10	Hand Lever	M.S (POWDER COATED)
11	Name Plate	M.S (POWDER COATED)
12	Fastener	M.S / S.S



## HYDROSTATIC TEST PRESSURE

Availability	Size Range	Manufacturing and Pressure Rating	Temperature Rating	Hydrostatic Test Pressure	
				Body	Seat
Standard Supply	50 to 900 mm	IS:13095 PN 1.0	-10°C to 90°C	15 Kg./cm <sup>2</sup>	10 Kg./cm <sup>2</sup>
	50 to 300 mm	IS:13095 PN 1.6	-10°C to 90°C	24 Kg./cm <sup>2</sup>	16 Kg/cm <sup>2</sup>

PN 20 & PN 25 also available

## DIMENSIONS IN MM

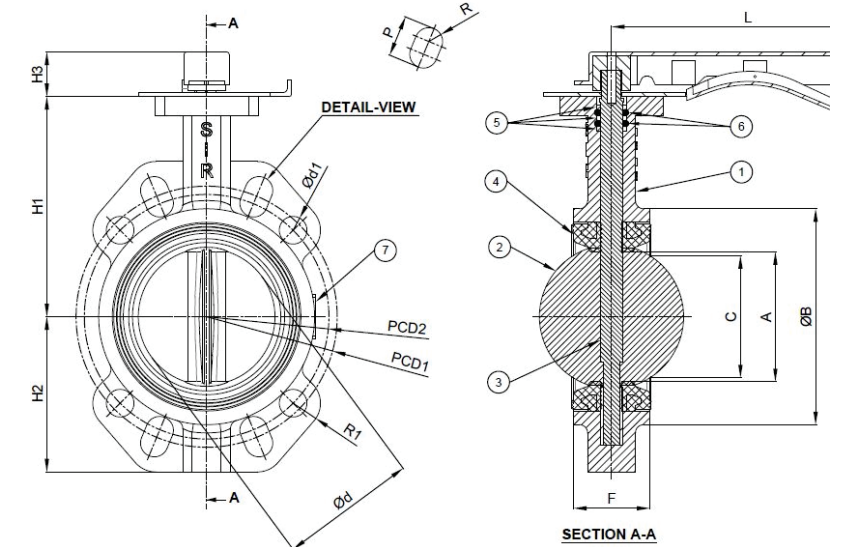
SIZE	H1	H2	H3	F	A	ØB	L	ØD
DN50	111	67	28	42	49	96	175	54
DN65	118	74	34	45	64	110	216	69
DN80	127	85	35	45	75	127.5	216	82
DN100	145	101	39	51	98	160	267	103
DN125	162	120	39	55	121	192	267	126
DN150	174	134	39	55	144	213	268	148
DN200	221	162	45	59	194	271	350	198
DN250	285	216	45	66.5	251	325	350	255
DN300	315	229	45	76.5	298	376	350	302



# BUTTERFLY VALVE PRIME MODEL

## MATERIALS

S. No.	Parts	Material
01	Body	C.I / D.I / S.S / WCB
02	Disc	D.I/S.S
03	Liner	EPDM/NITRILE
04	Upper Stem	ASTM A 276, Gr SS410
05	Lower Stem	ASTM A 276, Gr Ss410
06	O-Ring	EPDM
07	Plug	M.S (Chrome Plated)
08	Bush	PTFE
09	Fastener	STAINLESS STEEL



## HYDROSTATIC TEST PRESSURE

Availability	Size Range	Manufacturing and Pressure Rating	Temperature Rating	Hydrostatic Test Pressure	
				Body	Seat
Standard Supply	50 to 900 mm	IS:13095 PN 1.0	-10°C to 90°C	15 Kg./cm <sup>2</sup>	10 Kg./cm <sup>2</sup>
	50 to 300 mm	IS:13095 PN 1.6	-10°C to 90°C	24 Kg./cm <sup>2</sup>	16 Kg/cm <sup>2</sup>

PN 20 & PN 25 also available

## DIMENSIONS IN MM

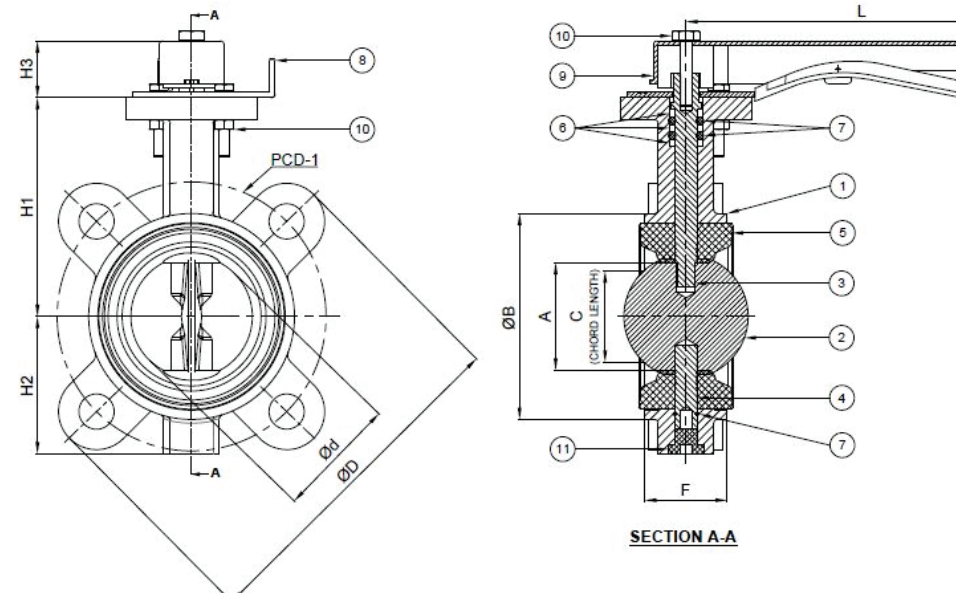
Size	H1	H2	H3	F	C	A	ØB	L	Ød	P	R	R1	Ød1
DN50	112	67	28	43	33	40	98	175	50	25	10	20	-
DN65	119	74	34	46	45	52	109	216	65	25	10	20	-
DN80	123	84	34	46	67	76	125	216	80	30	10	20	20
DN100	145	120	38	52	84	90	160	267	100	25	10	20	20
DN125	162	135	140	56	112	117	190	267	125	20	11	24	-
DN150	174	155	39	56	132	139	215	267	143	28	11	24	-
DN200	221	186	45	60	192	198	270	350	200	45	15	26	-



# BUTTERFLY VALVE LUGG TYPE

## MATERIALS

S. No.	Parts	Material
01	Body	C.I / D.I / S.S / WCB
02	Disc	D.I/S.S
03	Upper Stem	ASTM A 276, Gr SS410
04	Lower Stem	ASTM A 276, Gr SS410
05	O-Ring	EPDM
06	Seat	EPDM
07	Body Bush	NYLON / PTFE
08	Bottom Plug	M.S (CHROME PLATED)
09	Notch Plate	M.S SHEET
10	Hand Lever	M.S SHEET
11	Fastener	M.S / S.S



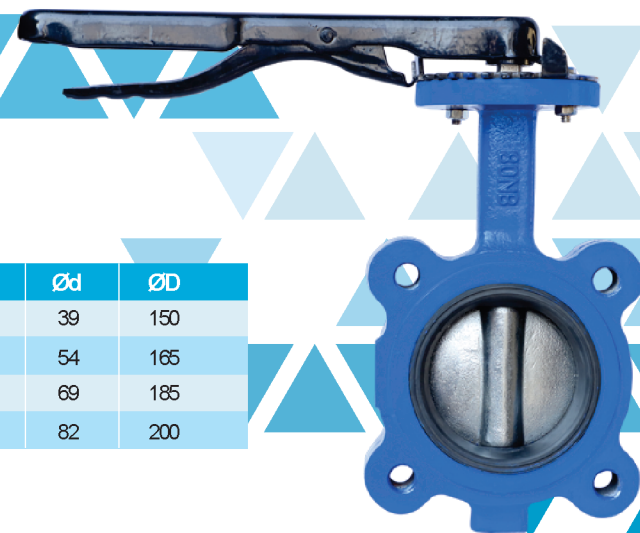
## HYDROSTATIC TEST PRESSURE

Availability	Size Range	Manufacturing and Pressure Rating	Temperature Rating	Hydrostatic Test Pressure	
				Body	Seat
Standard Supply	50 to 900 mm	IS:13095 PN 1.0	-10°C to 90°C	15 Kg./cm <sup>2</sup>	10 Kg./cm <sup>2</sup>
	50 to 300 mm	IS:13095 PN 1.6	-10°C to 90°C	24 Kg./cm <sup>2</sup>	16 Kg/cm <sup>2</sup>

PN 20 & PN 25 also available

## DIMENSIONS IN MM

SIZE	H1	H2	H3	F	C	A	ØB	L	Ød	ØD
DN40	106	61	28	33	26	32	97	175	39	150
DN50	111	67	28	43	41	49	111	216	54	165
DN65	118	74	34	46	58	64	130	216	69	185
DN80	127	85	34	46	73	78	160	267	82	200

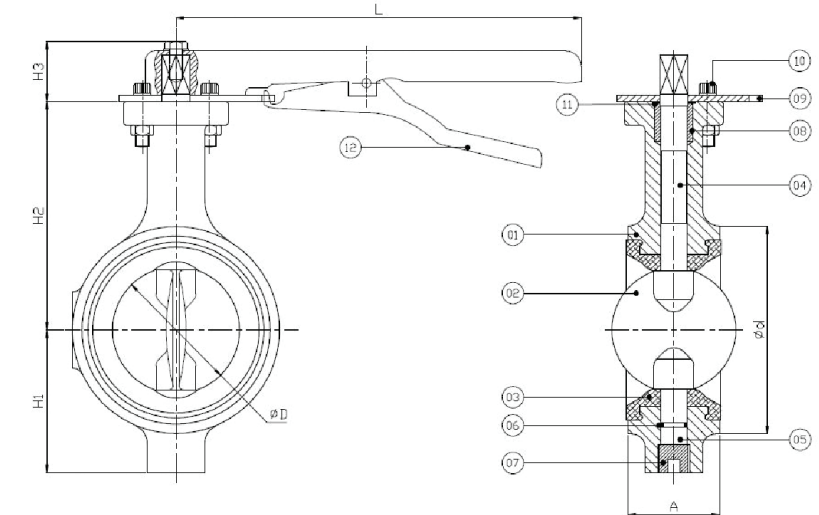


# BUTTERFLY VALVE AQUALINE



## MATERIALS

S. No.	Parts	Material
01	Body	C.I / D.I / S.S / WCB
02	Disc	D.I/S.S
03	Stem	ASTM A 276, Gr SS410
04	O-Ring	EPDM
05	Seat	EPDM
06	Body Bush	NYLON
07	Name Plate	M.S (POWDER COATED)



## HYDROSTATIC TEST PRESSURE

Availability	Size Range	Manufacturing and Pressure Rating	Temperature Rating	Hydrostatic Test Pressure	
				Body	Seat
Standard Supply	50 to 900 mm	IS:13095 PN 1.0	-10°C to 90°C	15 Kg./cm <sup>2</sup>	10 Kg./cm <sup>2</sup>
	50 to 300 mm	IS:13095 PN 1.6	-10°C to 90°C	24 Kg./cm <sup>2</sup>	16 Kg/cm <sup>2</sup>

PN 20 & PN 25 also available

## DIMENSIONS IN MM

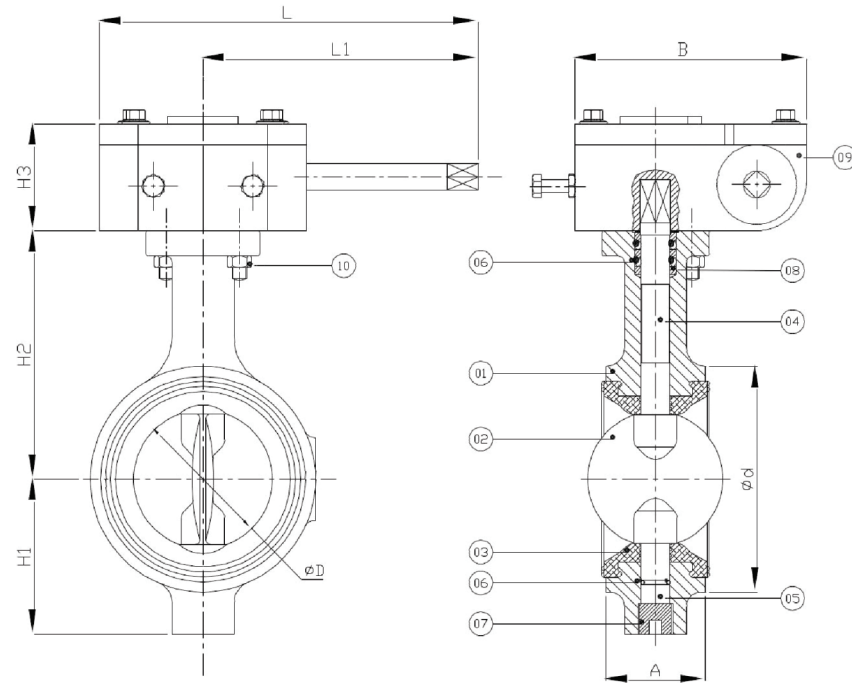
Size	H1	H2	H3	F	C	A	ØB	L	Ød	P	R	R1
DN50	112	67	28	43	33	40	98	175	50	25	10	20
DN65	119	74	34	46	45	52	109	216	65	25	10	20



# BUTTERFLY VALVE GEAR TYPE

## MATERIALS

S. No.	Parts	Material
01	Body	C.I / D.I / S.S / WCB
02	Disc	D.I/S.S
03	Liner	EPDM / Nitrile
04	Upper Stem	ASTMA 276, Gr SS410
05	Lower Stem	ASTMA 276, Gr SS410
06	O-Ring	EPDM
07	Plug	M.S (Chrome Plated)
08	Bush	PTFE
09	Gear Box	C.I / D.I
10	Fastener	STAINLESS STEEL



## HYDROSTATIC TEST PRESSURE

Availability	Size Range	Manufacturing and Pressure Rating	Temperature Rating	Hydrostatic Test Pressure	
				Body	Seat
Standard Supply	50 to 900 mm	IS:13095 PN 1.0	-10°C to 90°C	15 Kg./cm <sup>2</sup>	10 Kg./cm <sup>2</sup>
	50 to 300 mm	IS:13095 PN 1.6	-10°C to 90°C	24 Kg./cm <sup>2</sup>	16 Kg/cm <sup>2</sup>

PN 20 & PN 25 also available

## DIMENSIONS IN MM

Size	A	H1	H2	H3	L	L1	B	ØD	Ød
DN50	41.5	67	110	60	182	115	112	52	97
DN65	44.5	74	118	60	182	115	112	65.5	111
DN80	44.5	83	127	60	182	115	112	80.5	128
DN100	50.5	100	145	60	182	115	112	100	160
DN125	54.5	119	161	60	182	115	112	122.5	192
DN150	54.5	132	174	60	182	115	112	146.5	213
DN200	58.5	161	238	60	182	115	112	196.3	271
DN250	66.5	204	282	60	180	130	110	252.6	326
DN300	76.5	229	307	60	180	130	110	300.2	378

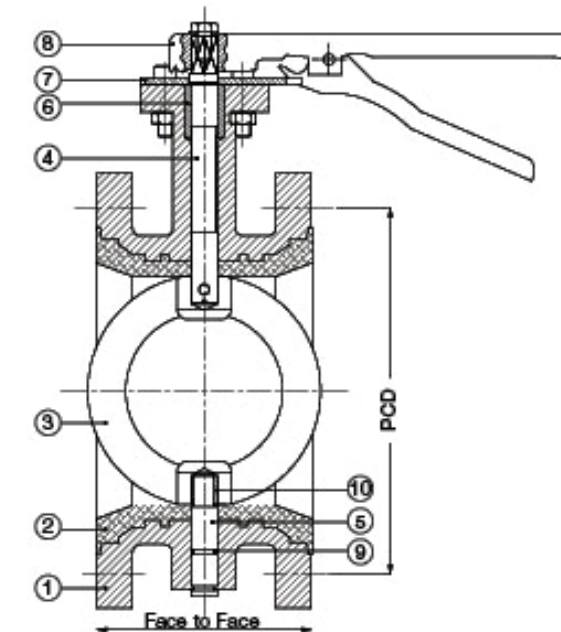


10

# BUTTERFLY VALVE FLANGED

## MATERIALS

S. No.	Parts	Material
01	Body	C.I / D.I / S.S / WCB
02	Liner	EPDM/Nitrile
03	Disc	D.I / S.S
04	Stem	S.S. 410
05	Ideal Shaft	S.S. 410
06	Body Bush	PTFE
07	Gear Sector	M.S
08	Lever	M.S
09	O-Ring	Nitrile/EPDM
10	Disc Bush	PTFE



## HYDROSTATIC TEST PRESSURE

Availability	Size Range	Manufacturing and Pressure Rating	Temperature Rating	Hydrostatic Test Pressure	
				Body	Seat
Standard Supply	50 to 900 mm	IS:13095 PN 1.0	-10°C to 90°C	15 Kg./cm <sup>2</sup>	10 Kg./cm <sup>2</sup>
	50 to 300 mm	IS:13095 PN 1.6	-10°C to 90°C	24 Kg./cm <sup>2</sup>	16 Kg/cm <sup>2</sup>

PN 20 & PN 25 also available

## DIMENSIONS IN MM

Size	PCD	FACE to FACE
DN40	110	106
DN50	125	108
DN65	145	112
DN80	160	114
DN100	190	127
DN125	220	140
DN150	250	140
DN200	320	152
DN250	385	165
DN300	450	178

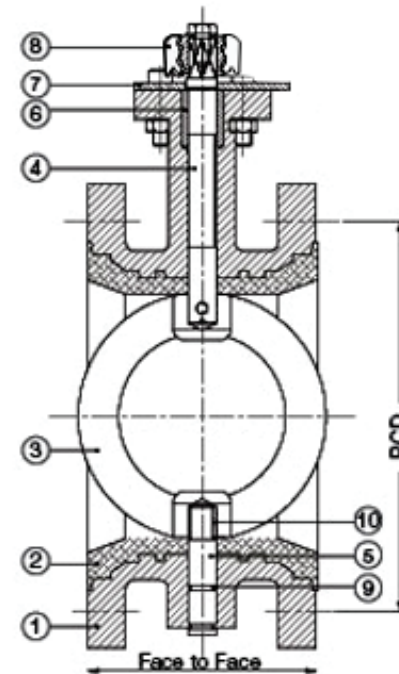


11

# BUTTERFLY VALVE FLANGED WITH GEAR BOX

## MATERIALS

S. No.	Parts	Material
01	Body	C.I / D.I / S.S / WCB
02	Disc	D.I/S.S
03	Liner	EPDM / Nitrile
04	Upper Stem	Ss410
05	Lower Stem	Ss410
06	O-Ring	EPDM / Nitrile
07	Notch Plate	M.S
08	Bush	PTFE
09	Gear Box	C.I / D.I



## HYDROSTATIC TEST PRESSURE

Availability	Size Range	Manufacturing and Pressure Rating	Temperature Rating	Hydrostatic Test Pressure	
				Body	Seat
Standard Supply	50 to 900 mm	IS:13095 PN 1.0	-10°C to 90°C	15 Kg./cm <sup>2</sup>	10 Kg./cm <sup>2</sup>
	50 to 300 mm	IS:13095 PN 1.6	-10°C to 90°C	24 Kg./cm <sup>2</sup>	16 Kg./cm <sup>2</sup>

PN 20 & PN 25 also available

## DIMENSIONS IN MM

Size	PCD	FACE to FACE
DN40	98	106
DN50	125	108
DN65	145	112
DN80	160	114
DN100	190	127
DN125	220	140
DN150	250	140
DN200	320	152
DN250	385	165
DN300	450	178
DN350	510	190
DN400	585	216
DN450	610	222
DN500	670	229
DN600	795	267

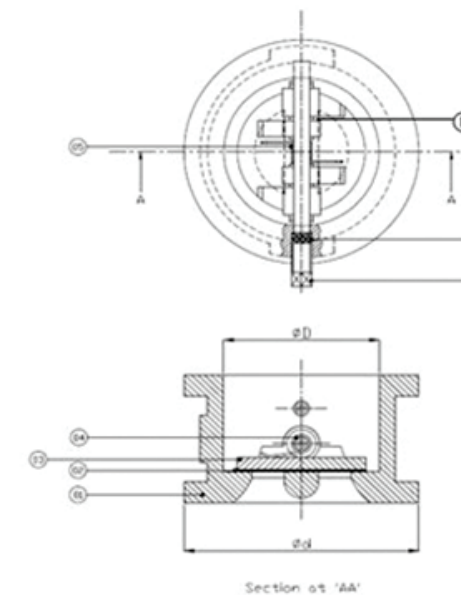


12

# DUAL PLATE CHECK VALVE

## MATERIALS

S. No.	Parts	Material
01	Body	C.I / D.I / S.S / WCB
02	Seat	EPDM
03	Plates	D.I / S.S
04	Shaft	ASTM A 276, Gr SS410
05	Spring	AISI 302
06	O-Ring	NITRILE / EPDM
07	Plug	M.S (Chrome Plated)
08	Fastener	STAINLESS STEEL



## HYDROSTATIC TEST PRESSURE

Availability	Size Range	Temperature Rating	Hydrostatic Test Pressure	
			Body	Seat
Standard Supply	50 to 600 mm	-10°C to 90°C	15 Kg./cm <sup>2</sup>	10 Kg./cm <sup>2</sup>
	50 to 300 mm	-10°C to 90°C	24 Kg./cm <sup>2</sup>	16 Kg./cm <sup>2</sup>

## DIMENSIONS IN MM

Size	ØD	Ød	H
DN50	62.5	95	54
DN65	74	110	54
DN80	91	130	57
DN100	116	160	64
DN125	145	188	70
DN150	169.5	212	76
DN200	220	280	95
DN250	273	340	108
DN300	324	410	143



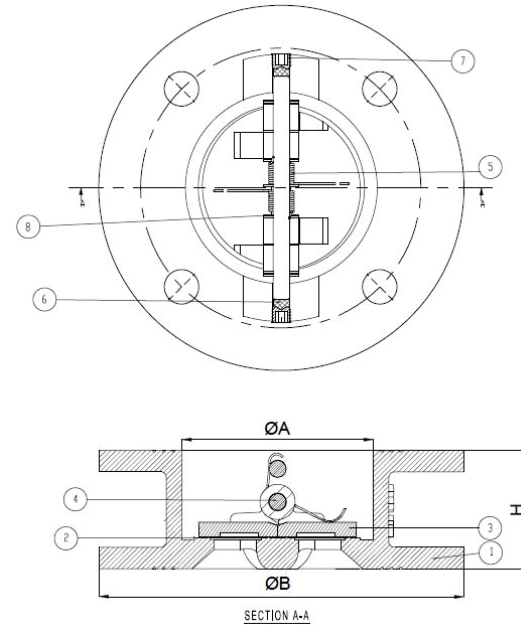
13



# DUAL PLATE CHECK VALVE FLANGED

## MATERIALS

S. No.	Parts	Material
01	Body	C.I / D.I / S.S / WCB
02	Seat	EPDM
03	Plates	D.I/S.S
04	Shaft	ASTM A 276, Gr SS410
05	Spring	AISI 302
06	O-Ring	NITRILE / EPDM
07	Plug	M.S (Chrome Plated)
08	Fastener	STAINLESS STEEL



## HYDROSTATIC TEST PRESSURE

Availability	Size Range	Temperature Rating	Hydrostatic Test Pressure	
			Body	Seat
Standard Supply	50 to 600 mm	-10°C to 90°C	15 Kg./cm <sup>2</sup>	10 Kg./cm <sup>2</sup>
	50 to 300 mm	-10°C to 90°C	24 Kg./cm <sup>2</sup>	16 Kg/cm <sup>2</sup>

## DIMENSIONS IN MM

Size	ØD	Ød	H
DN50	62.5	95	54
DN65	74	110	54
DN80	91	130	57
DN100	116	160	64
DN125	145	188	70
DN150	169.5	212	76
DN200	220	280	95
DN250	273	340	108
DN300	324	410	143

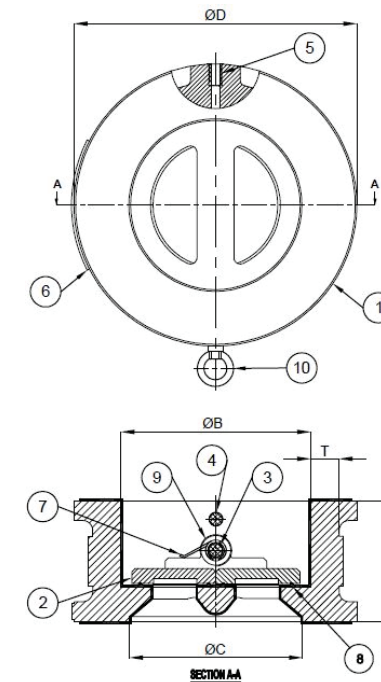


14

# DUAL PLATE CHECK VALVE FULL-RUBBER

## MATERIALS

S. No.	Parts	Material
01	Body	C.I / D.I / S.S / WCB
02	Seat	EPDM
03	Plates	D.I / S.S
04	Shaft	ASTM A 276, Gr SS410
05	Spring	AISI 302
06	O-Ring	NITRILE / EPDM
07	Plug	M.S (Chrome Plated)
08	Fastener	STAINLESS STEEL



## HYDROSTATIC TEST PRESSURE

Availability	Size Range	Temperature Rating	Hydrostatic Test Pressure	
			Body	Seat
Standard Supply	50 to 600 mm	-10°C to 90°C	15 Kg./cm <sup>2</sup>	10 Kg./cm <sup>2</sup>
	50 to 300 mm	-10°C to 90°C	24 Kg./cm <sup>2</sup>	16 Kg/cm <sup>2</sup>

## DIMENSIONS IN MM

Size	ØD	Ød	H
DN50	62.5	95	54
DN65	74	110	54
DN80	91	130	57
DN100	116	160	64
DN125	145	188	70
DN150	169.5	212	76
DN200	220	280	95
DN250	273	340	108
DN300	324	410	143



15

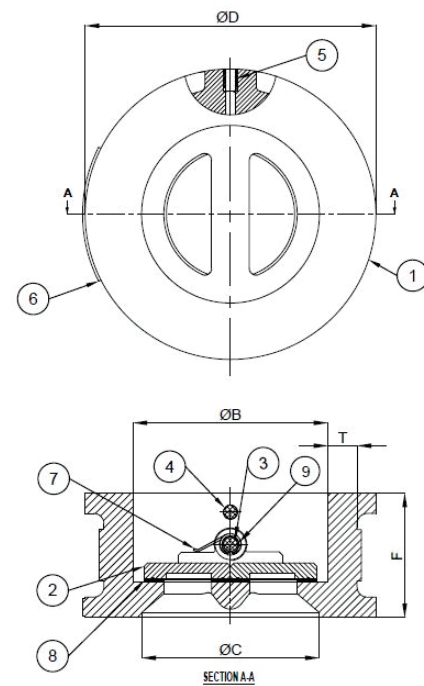




# DUAL PLATE CHECK VALVE

## MATERIALS

S. No.	Parts	Material
01	Body	C.I / D.I / S.S / WCB
02	Seat	EPDM
03	Plates	D.I/S.S
04	Shaft	ASTMA 276, Gr SS410
05	Spring	AISI 302
06	O-Ring	NITRILE / EPDM
07	Plug	M.S (Chrome Plated)
08	Fastener	STAINLESS STEEL



## HYDROSTATIC TEST PRESSURE

Availability	Size Range	Temperature Rating	Hydrostatic Test Pressure	
			Body	Seat
Standard Supply	50 to 600 mm	-10°C to 90°C	15 Kg./cm <sup>2</sup>	10 Kg./cm <sup>2</sup>
	50 to 300 mm	-10°C to 90°C	24 Kg./cm <sup>2</sup>	16 Kg/cm <sup>2</sup>

## DIMENSIONS IN MM

Size	ØD	Ød	H
DN50	62.5	95	54
DN65	74	110	54
DN80	91	130	57
DN100	116	160	64
DN125	145	188	70
DN150	169.5	212	76
DN200	220	280	95
DN250	273	340	108
DN300	324	410	143

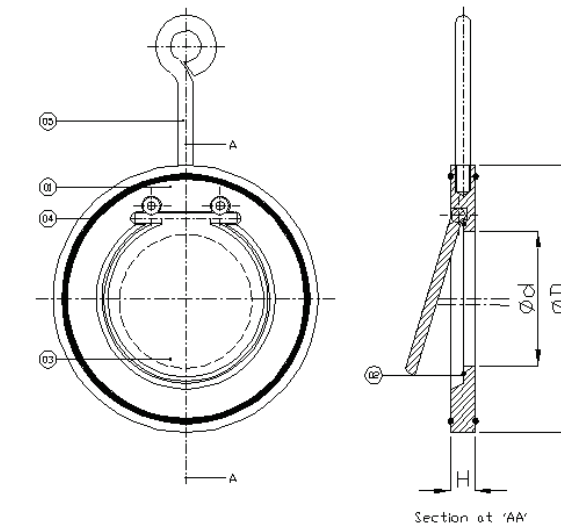


16

# WAFER TYPE CHECK VALVE

## MATERIALS

S. No.	Parts	Material
01	Body	D.I / M.S
02	Seat Ring	EPDM
03	Disc	M.S
04	Flange Ring	EPDM
05	Hook	M.S



## HYDROSTATIC TEST PRESSURE

Availability	Size Range	Temperature Rating	Hydrostatic Test Pressure	
			Body	Seat
Standard Supply	50 to 600 mm	-10°C to 90°C	15 Kg./cm <sup>2</sup>	10 Kg./cm <sup>2</sup>
	50 to 300 mm	-10°C to 90°C	24 Kg./cm <sup>2</sup>	16 Kg/cm <sup>2</sup>

## DIMENSIONS IN MM

Size	ØD	Ød	H
DN40	102	33	20
DN50	110	42	20
DN65	132	60	22
DN80	145	71	25
DN100	160	90	25
DN125	188	125	25
DN150	220	130	30
DN200	270	175	34
DN250	325	220	34
DN300	370	265	36



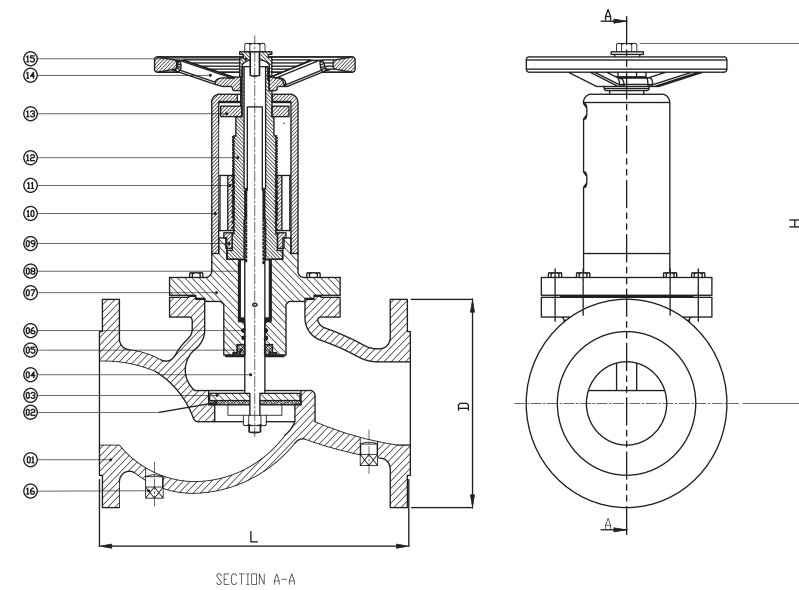
17



# BALANCING VALVE

## MATERIALS

S. No.	Parts	Material
01	Body	CI/DI
02	Seat	EPDM/Nitrile
03	Disc	SS/MS
04	Stem	SS410
05	Seal	EPDM
06	O-Ring	EPDM/Nitrile
07	Bonnet	CI/DI
08	Guide	Nylon/MS
09	Check Nut	Brass
10	Cover	D.I
11	Scale-1	M.S
12	Balancing Nut	SS/EN8
13	Scale-2	CI
14	Hand Wheel	CI
15	Nut	M.S
16	Plug	M.S



## HYDROSTATIC TEST PRESSURE

Availability	Size Range	Manufacturing and Pressure Rating	Hydrostatic Test Pressure	
			Body	Seat
Standard Supply	32 to 350 mm	As per IS778 Class II	15Kg./cm <sup>2</sup>	10Kg./cm <sup>2</sup>
	50 to 300 mm	As per IS:778 Class II	24Kg./cm <sup>2</sup>	16Kg./cm <sup>2</sup>

## DIMENSIONS IN MM

Size	Outer Dia (D)	Face to Center Face (L)	Height to Top (H)
DN32	On Request	On Request	On Request
DN40	On Request	On Request	On Request
DN50	165	280	218
DN65	185	290	223
DN80	200	310	250
DN100	220	350	275
DN125	250	400	290
DN150	285	480	370
DN200	340	600	415
DN250	405	730	535
DN300	460	850	565

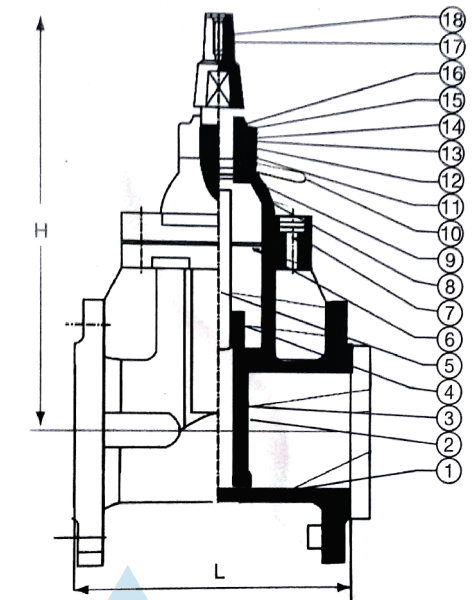
Dimensions are subject to change in course of product development



# RESILIENT GATE VALVE

## MATERIALS

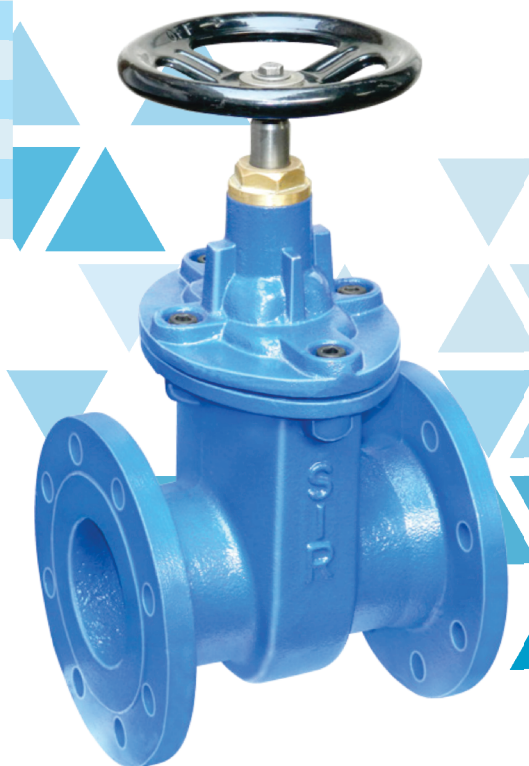
S. No.	Parts	Material	Standard	Grade
01.	Body	Ductile Iron	BS EN 1563	450/10,500/7
02.	Rubber	Rubber	MS 672:29	Nitrile / EPDM
	Coating		BS EN 681	(66-75 IRHD Hardness)
03.	Wedge	Ductile Iron	BS EN 1563	450/10, 500/7
04.	Stem Nut	Gun Metal	BS 1400	LG 2
05.	Stem	Stainless Steel	BS 970:Part 1	431S29, 304S31
06.	Gasket	Rubber	MS 672:99	Nitrile / EPDM
			BS EN 681	(66-75 IRHD Hardness)
07.	Bolts	Steel	BS 3692	Grade 5
		Stainless Steel	BS 970:Part 1	431S29, 304S31
08.	Bonnet	Ductile Iron	BS EN 1563	450/10, 500/7
09.	O-Ring	Rubber	MS 672:99	Nitrile / EPDM
			BS EN 681	(66-75 IRHD Hardness)
10.	Trust Collar	Gun Metal	BS 1400	LG 2
11.	O-Ring	Rubber	MS 672:99	Nitrile / EPDM
			BS EN 681	(66-75 IRHD Hardness)
12.	O-Ring	Rubber	MS 672:99	Nitrile / EPDM
			BS EN 681	(66-75 IRHD Hardness)
13.	Sleeve	Gun Metal	BS 1400	LG 2
14.	O-Ring	Rubber	MS 672:99	Nitrile / EPDM
			BS EN 681	(66-75 IRHD Hardness)
15.	Gland	Ductile Iron	BS EN 1563	450/10, 500/7
16.	Dust-Proof	Rubber	MS 672:99	Nitrile / EPDM
			BS EN 681	(66-75 IRHD Hardness)
17.	Bolts	Steel	BS 3692	Grade 5
		Stainless Steel	BS 970:Part 1	431S29, 304S31
18.	Cap	Ductile Iron	BS EN 1563	450/10, 500/7



## DIMENSIONS IN MM

Size	L	H
DN50	178	280
DN65	190	290
DN80	203	400
DN100	229	450
DN125	250	500
DN150	267	520
DN200	292	630
DN250	330	750
DN300	356	825

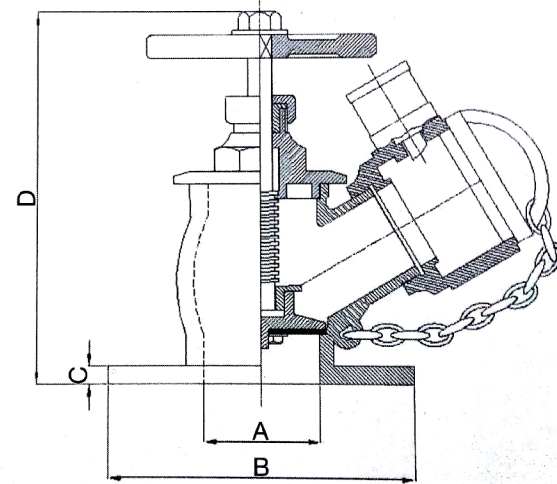
Dimensions are subject to change in course of product development



# LANDING VALVE FIRE HYDRANT

## MATERIALS

Parts	Material
Body, Bonnet & Disc Nut	S.S.
Bolt, Gland Nut & Chain	Carbon Steel
Gland, Gland Nut & Holder	S.S.
Stem, Nut & Cam Tooth	Brass/S.S.
Handwheel	Cast Iron / CRCC
Packing	PTFE
Disc & Washer	S.S. & Rubber
Cam Housing, Cap & Adjusting Ring	S.S.
Instantaneous Coupling	S.S.
Spring	Phosphorous Bronze
Black Cap	Aluminium / PVC



## HYDROSTATIC TEST PRESSURE

21 kg/cm<sup>2</sup>g (300 psig)

## DIMENSIONS IN MM

Size	A	B	C	D
DN80	75	200	12	240

## DESCRIPTION

Design Standard IS 5290. Screwed in Bonnet Having Instantaneous coupling with single outlet. PTFE Gland Packing for longer life and smooth operation. Large flow way area to get full flow of water. Conforming to Type -A. Specification.

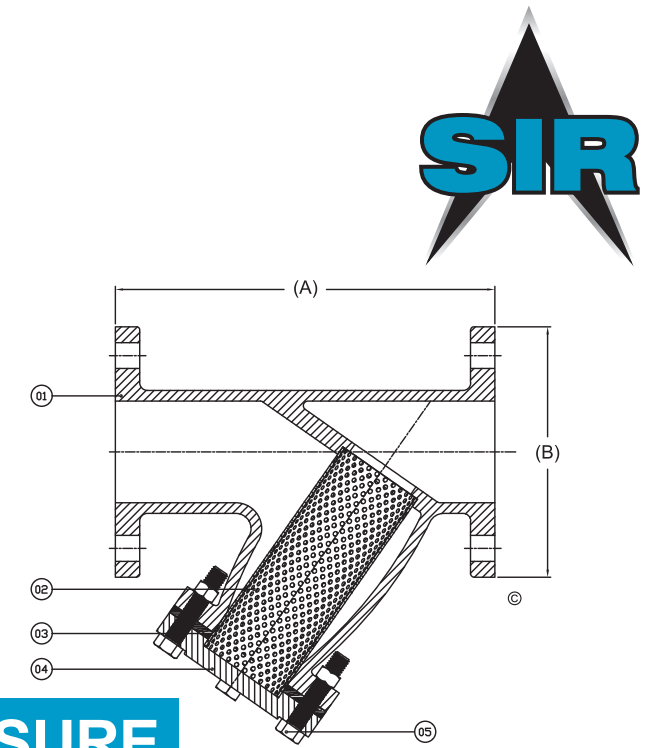


20

# Y-STRAINER FLANGED

## MATERIALS

S.No.	Parts	Material	Specification
01	Body	Cast Iron/S.G. Iron	IS: 210 FG 200/ IS 1865, 500/7
02	Screen	Stainless Steel	S.S.
03	Gasket	Natural Rubber	IS:638
04	Cover	Cast Iron	IS:210 FG 200
05	Bolts	Carbon Steel	IS:1363



## HYDROSTATIC TEST PRESSURE

Availability	Size Range	Manufacturing and Pressure Rating	Hydrostatic Test Pressure
			Body
Standard Supply	40 to 350 mm	PN 10	10 Kg./cm <sup>2</sup>
		PN 16	16 Kg./cm <sup>2</sup>

## DIMENSIONS IN MM

Size	Face to Face (A)	Flange Dia (B)	Flange Thickness (C)
DN40	205	135	16
DN50	205	154	16
DN65	220	160	16
DN80	265	186	17
DN100	330	215	20
DN125	418	255	20
DN150	440	285	22
DN200	525	340	23
DN250	725	405	25
DN300	750	480	25
DN350	845	535	30

Dimensions are subject to change in course of product development

## DESCRIPTION

Cast Iron Strainer, Y-Type with Stainless Steel Mesh

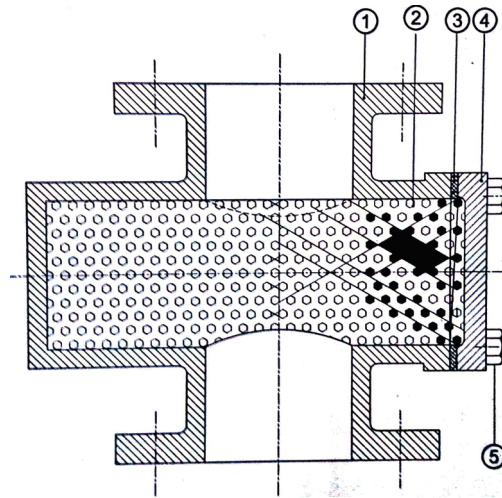


21

# POT STRAINER FLANGED

## MATERIALS

S.No.	Parts	Material
01	Body	Cast Iron / Ductile Iron
02	Mesh	Stainless Steel
03	Gasket	Natural Rubber
04	Cover	Cast Iron
05	Bolts	Carbon Steel / MS



## HYDROSTATIC TEST PRESSURE

Availability	Size Range	Manufacturing and Pressure Rating	Hydrostatic Test Pressure
			Body
Standard Supply	50 TO 600mm	As per Our Specifications	10 Kg./cm <sup>2</sup>

## DIMENSIONS IN MM

Size	Face to Face (A)	Flange Dia (B)	Flange Thickness (C)
DN50	166	170	16
DN65	195	185	16
DN80	203	197	21
DN100	255	220	22
DN125	265	255	22.5
DN150	275	285	23
DN200	400	340	24.5
DN250	470	400	28
DN300	515	455	28

Dimensions are subject to change in course of product development

## DESCRIPTION

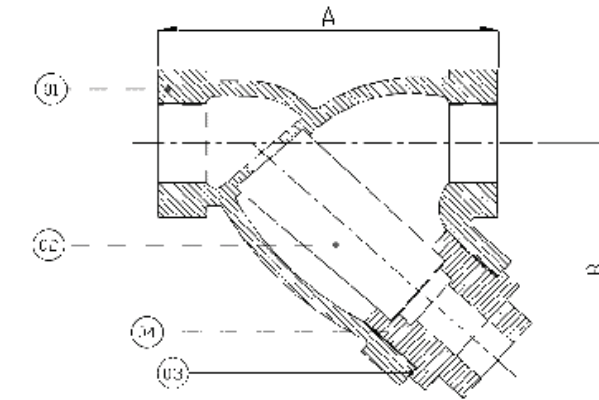
Cast Iron Strainers, POT- Type with Stainless Steel Mesh.



# Y-STRAINER SCREWED

## MATERIALS

S.No.	Parts	Material
01	Body	C.I / D.I
02	Cover	C.I / D.I
03	Gasket	EPDM
04	Filter Screen	S.S



## HYDROSTATIC TEST PRESSURE

Availability	Size Range	Manufacturing and Pressure Rating	Hydrostatic Test Pressure
			Body
Standard Supply	50 TO 600mm	As per Our Specifications	10 Kg./cm <sup>2</sup>

## DIMENSIONS IN MM

Size	Face to Face (A)	Height (B)	Mesh Hole size	No. of holes per Sq. inch
DN15	75	61	Ø1/16"	67
DN20	92	71	Ø1/16"	67
DN25	108	80	Ø1/16"	67
DN32	133	108	Ø1/16"	67
DN40	156	152	Ø1/16"	67
DN50	190	155	Ø1/16"	67
DN65	246	166	1/16"	67
DN80	275	202	Ø1/8"	27

## DESCRIPTION

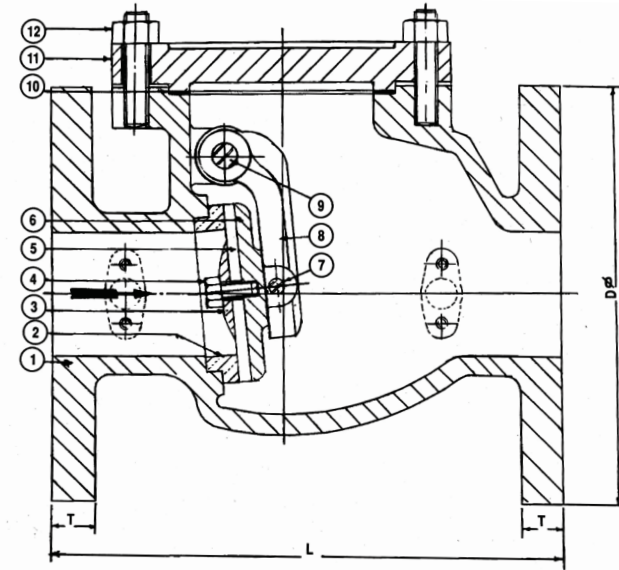
Cast Iron Strainers, POT- Type with Stainless Steel Mesh.



# REFLUX VALVE WITH RUBBER FLAP

## MATERIALS

S. No.	Parts	Material
01	Body	C.I / D.I
02	Body Seat Ring	BRONZE / GUN METAL
03	Door Face Disc	IS:210,Gr. FG200
04	Door Bolt	CARBON STEEL
05	Door Packing	RUBBER
06	Door	C.I / D.I
07	Door Suspension Pin	STAINLESS STEEL
08	Hinge	IS:210,Gr. FG200
09	Hinge Pin	STAINLESS STEEL
10	Gasket	RUBBER
11	Cover	C.I
12	Stud & Nut	CARBON STEEL
13	Plug Hinge Pin	BRONZE / GUN METAL

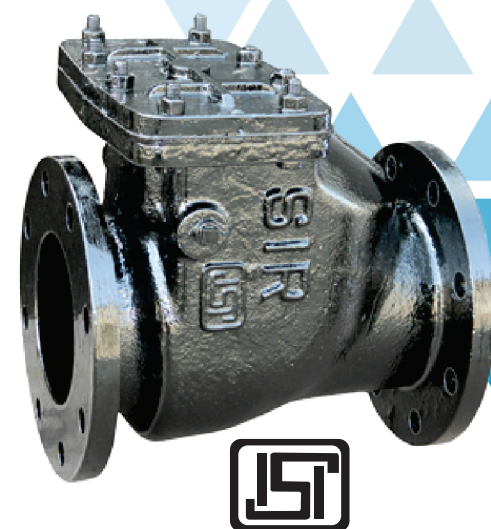


## HYDROSTATIC TEST PRESSURE

Availability	Size Range	Manufacturing and Pressure Rating	Hydrostatic Test Pressure	
			Body	Seat
Standard Supply	50 to 125 mm	IS:5312(Part-I):2004	24 Kg./cm <sup>2</sup>	16 kg./cm <sup>2</sup>
	150 to 600 mm	IS:5312(Part-I):2004	15 Kg./cm <sup>2</sup>	10 Kg./cm <sup>2</sup>

## DIMENSIONS IN MM

Size	Length	Alternate	D	PCD
Dn50	203	200	165	125
Dn65	216	240	185	145
Dn80	241	260	200	160
Dn100	292	300	220	180
Dn125	330	350	250	210
Dn150	356	400	285	240
Dn200	495	500	340	295
Dn250	622	600	395	350
Dn300	698	700	445	400
Dn350	787	800	505	460
Dn400	914	900	565	515

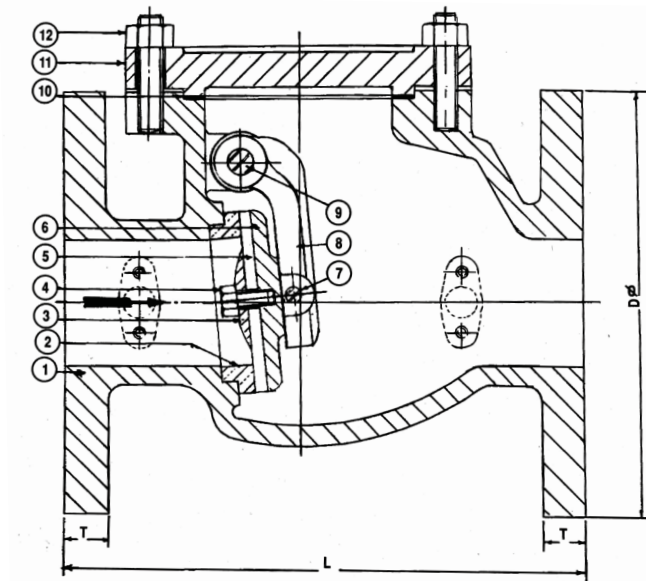


24

# REFLUX VALVE WITH G.M. FLAP

## MATERIALS

S. No.	Parts	Material
01	Body	C.I / D.I
02	Body Seat Ring	BRONZE / GUN METAL
03	Door Face Disc	IS:210,Gr. FG200
04	Door Bolt	CARBON STEEL
05	Door Packing	RUBBER
06	Door	C.I / D.I
07	Door Suspension Pin	STAINLESS STEEL
08	Hinge	IS:210,Gr. FG200
09	Hinge Pin	STAINLESS STEEL
10	Gasket	RUBBER
11	Cover	C.I
12	Stud & Nut	CARBON STEEL
13	Plug Hinge Pin	BRONZE / GUN METAL



## HYDROSTATIC TEST PRESSURE

Availability	Size Range	Manufacturing and Pressure Rating	Hydrostatic Test Pressure	
			Body	Seat
Standard Supply	50 to 125 mm	IS:5312(Part-I):2004	24 Kg./cm <sup>2</sup>	16 kg./cm <sup>2</sup>
	150 to 600 mm	IS:5312(Part-I):2004	15 Kg./cm <sup>2</sup>	10 Kg./cm <sup>2</sup>

## DIMENSIONS IN MM

Size	Length	Alternate	D	PCD
Dn50	203	200	165	125
Dn65	216	240	185	145
Dn80	241	260	200	160
Dn100	292	300	220	180
Dn125	330	350	250	210
Dn150	356	400	285	240
Dn200	495	500	340	295
Dn250	622	600	395	350
Dn300	698	700	445	400



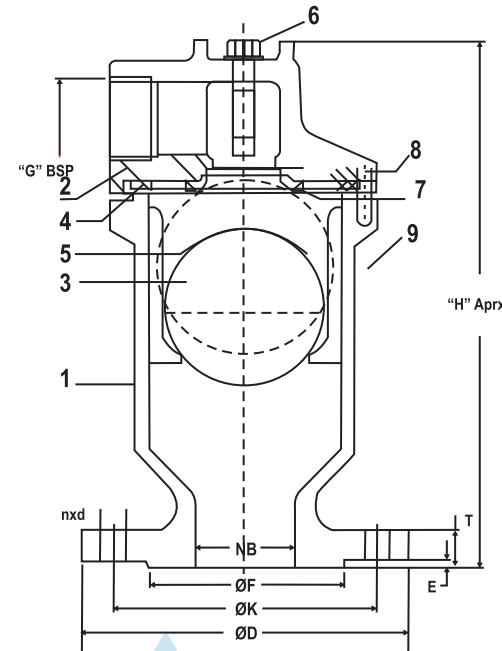
25

www.sirvalve.com

# AIR VALVE

## MATERIALS

S. No.	Parts	Material	Grade
1	Body	Ductile Iron	GGG 400/15
2	Cover	Ductile Iron	GGG 400/15
3	Float	SS	AISI 304
4	Gasket	Rubber	A2
5	Hood	SS	AISI 304
6	Guide screw	SS	A2
7	Sealing ring	Rubber	EPDM/NBR
8	Hexagonal Head Screw	SS/CS	A2/Galvanized Steel
9	Plug screw	SS	AISI 304



## HYDROSTATIC TEST PRESSURE

DN (mm)	PN (bar)	Permissible Working Pressure (bar)	Body Test Pressure(bar)
40-200	10	10	16
40-200	16	16	24
40-200	20	20	30

1 bar = 0.1 Mpa = 14.3 Psi = 1.019 kg/cm<sup>2</sup>

## DIMENSIONS IN MM

Valve Size	ØD	T	E	ØF	ØK	H	G	nxd	
								PN10	PN16
40	150	19	3	84	110	270	1-1/4"	4-19	
50	165	19	3	99	125	125	1-1/4"	4-19	
80	200	19	3	132	160	160	2"	4-19	8-19
100	220	19	3	156	180	180	2-1/4"	8-19	
150	285	19	3	211	240	240	4"	8-23	
200	340	20	3	295	295	295	4"	8-23	12-23



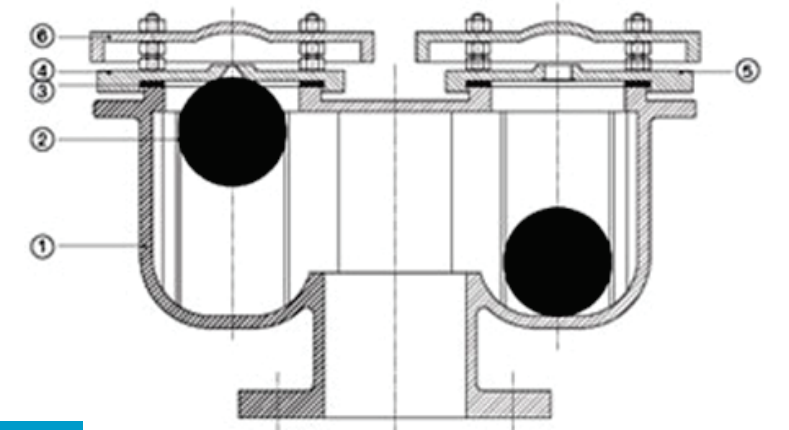
## DESCRIPTION

Automatic air venting of the fluid in the main and supply lines. In these types of valves the fluid flow activates the venting operation. Large venting orifice allows large volumes of air to be released on start-up and enter the pipe for vacuum breaking on shut down. Small venting orifice allows volumes of air to be released under the fluid pressure.

# AIR VALVE DOUBLE ACTION

## MATERIALS

S. No.	Parts	Material
01	Body	C.I / D.I
02	Float	Timber core with Rubber coating
03	Seal	Nitrile/EPDM
04	Cover (Small orifice)	C.I/D.I
05	Cover (Small orifice)	C.I/D.I
06	Cowl	C.I/D.I
07	Bolts & Nuts	C.S



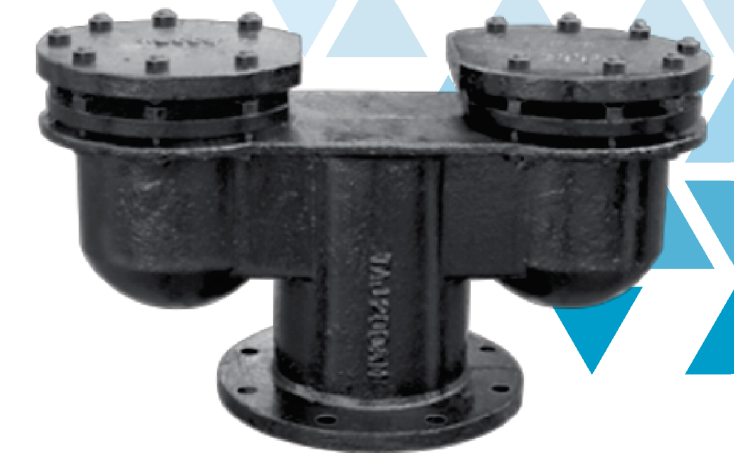
## HYDROSTATIC TEST PRESSURE

DN (mm)	PN (bar)	Permissible Working Pressure (bar)	Body Test Pressure(bar)
40-200	10	10	16
40-200	16	16	24
40-200	20	20	30

1 bar = 0.1 Mpa = 14.3 Psi = 1.019 kg/cm<sup>2</sup>

## DIMENSIONS IN MM

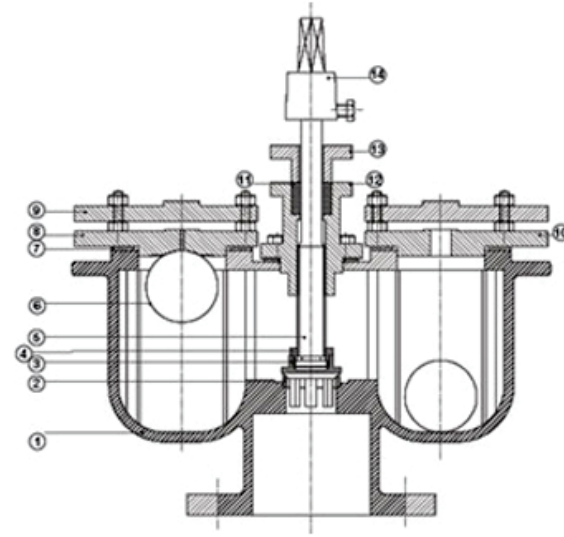
Size	A(min)	B(min)	C(min)	Suitable For Main
Dn50	442	210	224	UP TO 100
Dn65	442	210	264	125 TO 100
Dn80	504	236	287	225 TO 200
Dn100	504	236	287	225 TO 350
Dn125	634	280	356	400 TO 500
Dn150	862	430	476	600 TO 1900
Dn200	988	506	580	1000 TO 1200



# AIR VALVE ISOLATING

## MATERIALS

S. No.	Parts	Material
01	Body	C.I / D.I
02	Seat	Brass
03	Disc	Brass
04	Check Nut	Brass
05	Stem	S.S-304
06	Float	Timber core with Rubber coating
07	Seal	Nitrile/EPDM
08	Cover (Small orifice)	C.I / D.I
09	Cowl	C.I / D.I
10	Cover (Large orifice)	C.I / D.I
11	Gland Flange	Graphited Asbestos
12	Stem Guide Cover	C.I / D.I
13	Gland Flange	C.I / D.I
14	Cap	C.I / D.I
15	Bolts & Nuts	C.S



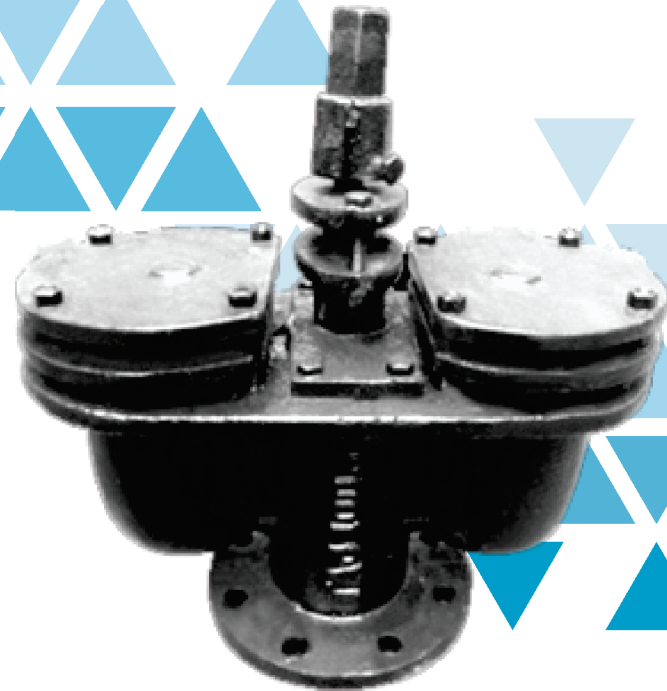
## HYDROSTATIC TEST PRESSURE

DN (mm)	PN (bar)	Permissible Working Pressure (bar)	Body Test Pressure(bar)
40-200	10	10	16
40-200	16	16	24
40-200	20	20	30

1 bar = 0.1 Mpa = 14.3 Psi = 1.019 kg/cm<sup>2</sup>

## DIMENSIONS IN MM

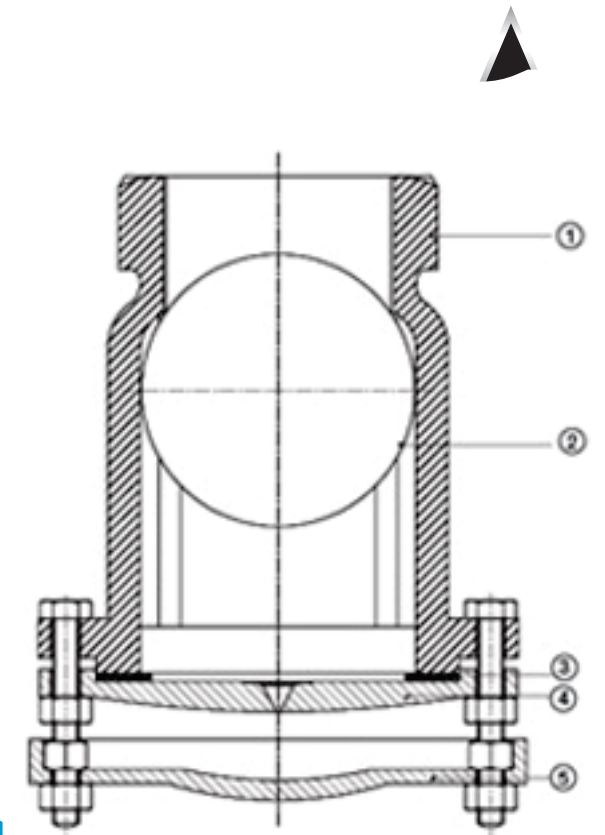
Size	A(min)	B(min)	C(min)	Suitable For Main
Dn50	442	210	224	UP TO 100
Dn65	442	210	264	125 TO 100
Dn80	504	236	287	225 TO 200
Dn100	504	236	287	225 TO 350
Dn125	634	280	356	400 TO 500
Dn150	862	430	476	600 TO 1900
Dn200	988	506	580	1000 TO 1200



# AIR VALVE SINGLE ACTION

## MATERIALS

S. No.	Parts	Material
01	Body	C.I / D.I
02	Float	Timber core with Rubber coating
03	Seal	Nitrile/EPDM
04	Cover	C.I/D.I
05	Cowl	C.I/D.I
06	Bolts & Nuts	C.S



## HYDROSTATIC TEST PRESSURE

DN (mm)	PN (bar)	Permissible Working Pressure (bar)	Body Test Pressure(bar)
40-200	10	10	16
40-200	16	16	24
40-200	20	20	30

1 bar = 0.1 Mpa = 14.3 Psi = 1.019 kg/cm<sup>2</sup>

## DIMENSIONS IN MM

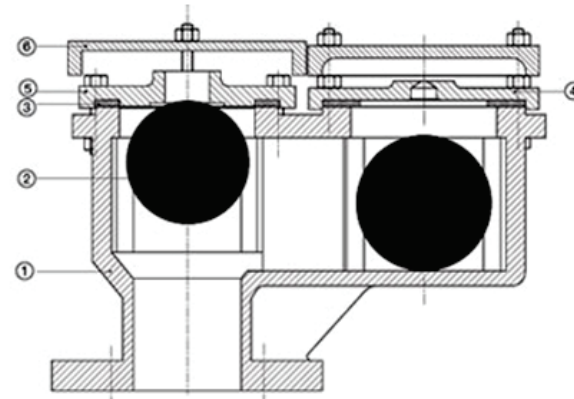
Size	B(min)	C SQ. (min)	Suitable For Main
Dn15	196	118	UP TO 100
Dn25	255	158	UP TO 100
Dn40	290	158	UP TO 100



# AIR VALVE KINETIC

## MATERIALS

S. No.	Parts	Material
01	Body	C.I / D.I
02	Float	Timber core with Rubber coating
03	Seal	Nitrile/EPDM
04	Cover (Small orifice)	C.I/D.I
05	Cover (Small orifice)	C.I/D.I
06	Cowl	C.I/D.I
07	Bolts & Nuts	C.S



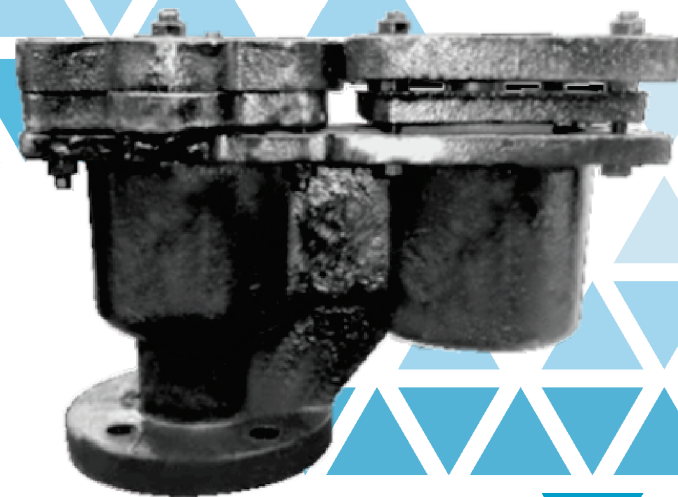
## HYDROSTATIC TEST PRESSURE

DN (mm)	PN (bar)	Permissible Working Pressure (bar)	Body Test Pressure(bar)
40-200	10	10	16
40-200	16	16	24
40-200	20	20	30

1 bar = 0.1 Mpa = 14.3 Psi = 1.019 kg/cm<sup>2</sup>

## DIMENSIONS IN MM

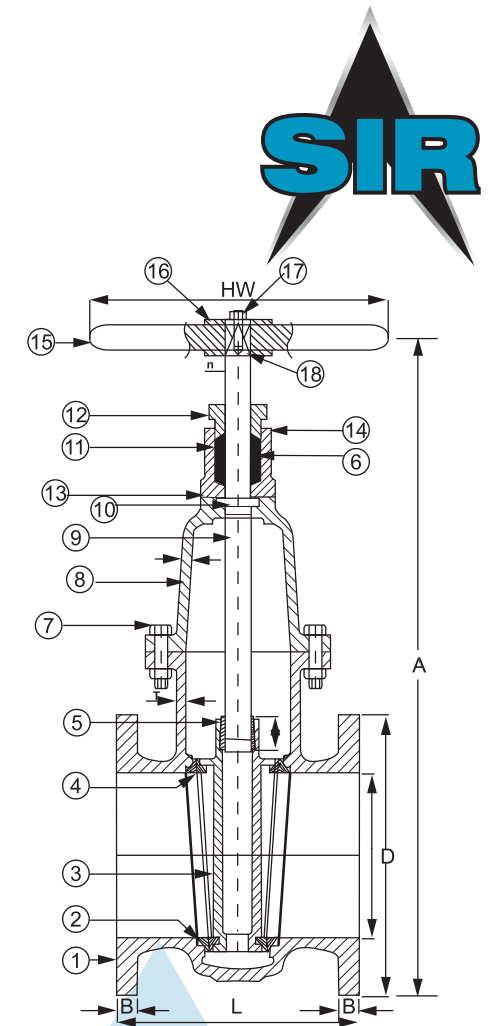
Size	A(min)	B(min)	C(min)	Suitable For Main
Dn40	260	196	324	UP TO 100
Dn50	280	211	352	125 TO 200
Dn80	305	236	373	225 TO 350
Dn100	360	280	424	400 TO 500
Dn125	487	450	674	600 TO 900
Dn150	487	450	674	600 TO 900
Dn200	700	506	739	1000 TO 1200



# SLUICE VALVE WITH WHEEL

## MATERIALS

S. No.	Parts	Material	Specification
01	Body	Cast Iron	IS:210 Gr.FG 200
02	Body Seat Ring	Leaded Tin Bronze	IS:318 LTB2
03	Wedge	Cast Iron	IS:210 Gr.FG 200
04	Wedge Ring	Leaded Tin Bronze	IS:318 LTB2
05	Wedge Nut	Leaded Tin Bronze	IS:318 LTB2
06	Gasket	Rubber	IS:638 Type-B
07	Bolts & Nuts	Carbon Steel	IS:1363
08	Bonnet	Cast Iron	IS:210 Gr.FG 200
09	Stem	Stainless Steel	IS:6603 12Cr12
10	Bolts & Nuts	Carbon Steel	IS:1363
11	Gasket	Rubber	IS:638 Type-B
12	Stuffing Box	Cast Iron	IS:210 Gr.FG 200
13	Packing	Asbestos	IS:4687
14	Gland	Cast Iron	IS:210 Gr.FG 200
15	Hand Wheel	Cast Iron	IS:210 Gr.FG 200
16	Washer	Mild Steel	
17	Bolts	Carbon Steel	IS:1363
18	Bolts & Nuts	Carbon Steel	IS:1363



## HYDROSTATIC TEST PRESSURE

Availability	Size Range	Manufacturing and Pressure Rating	Hydrostatic Test Pressure	
			Body	Seat
Standard Supply	50 to 700 mm	IS:14846 PN 1.0	15 Kg./cm <sup>2</sup>	10 Kg./cm <sup>2</sup>
	50 to 300 mm	IS:14846 PN 1.6	24 Kg./cm <sup>2</sup>	16 Kg./cm <sup>2</sup>

## DIMENSIONS IN MM

DN Size	L	B	D	A	H/w PN1.0	Dia. PN1.6
50	178	16	165	365	225	280
65	190	16	185	380	225	280
80	203	21	200	425	225	280
100	229	22	220	470	320	360
125	254	22.5	250	485	320	360
150	267	23	285	595	320	360
200	292	24.5	340	725	360	450
250	330	26	395	835	400	640
300	356	27.5	445	910	400	640
350	381	29	505	1020	500	640
400	406	30	565	1110	640	730
450	432	31.5	615	1200	720	800
500	457	33	670	1300	720	800
600	508	36	780	1500	720	800
700	On Request	On Request	On Request	On Request	On Request	On Request

TOLERANCES AS PER IS 14846:2000

## DESCRIPTION

Cast Iron Double Flanged Sluice Valve as per IS 14846 : 2000 with G.M. Internals and IS 6603 12CR13 S.S. Spindle drilled as per IS:1538 with body preferred dimensions (PD) type. These valves can be supplied with S.S. Working Parts.



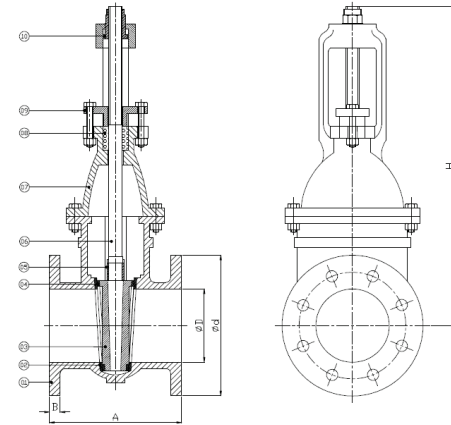
www.sirvalve.com



# SLUICE VALVE RISING

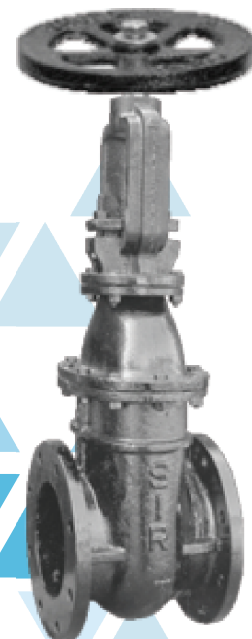
## MATERIALS

S. No.	Parts	Material	Specification
01	Body	C.I./D.I	IS:210 Gr.FG 200
02	Seat	Bronze	IS:318 LTB2
03	WEDGE	C.I./D.I	IS:210 Gr.FG 200
04	WEDGE RING	Bronze	IS:318 LTB2
05	Stem Nut	Bronze	IS:318 LTB2
06	Stem	S.S-304	IS:638 Type-B
07	Bonnet	C.I./D.I	IS:1363
08	Gland Packing	Graphited Asbestos	IS:210 Gr.FG 200
09	Gland Flange	C.I./D.I	IS:6603 12Cr12
10	Stem Guide	Bronze	IS:1363
11	Hand Wheel	C.I./D.I	IS:638 Type-B
12	Hand Wheel Nut	Bronze	IS:210 Gr.FG 200



## HYDROSTATIC TEST PRESSURE

Availability	Size Range	Manufacturing and Pressure Rating	Hydrostatic Test Pressure	
			Body	Seat
Standard Supply	50 to 700 mm	IS:14846 PN 1.0	15 Kg./cm <sup>2</sup>	10 Kg./cm <sup>2</sup>
	50 to 300 mm	IS:14846 PN 1.6	24 Kg./cm <sup>2</sup>	16 Kg./cm <sup>2</sup>



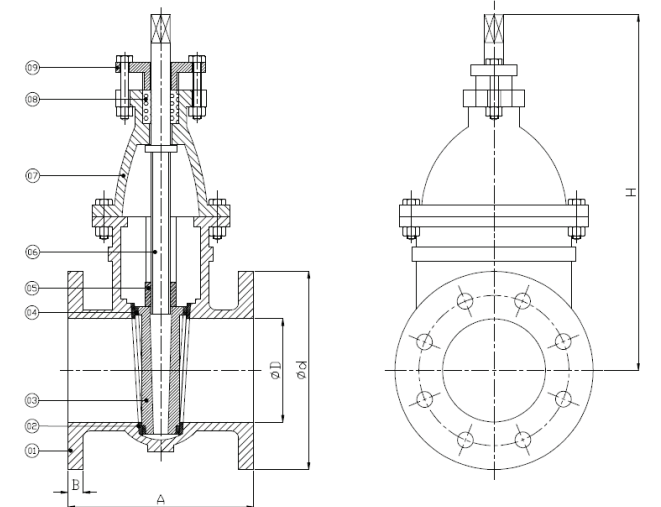
## DIMENSIONS IN MM

SIZE	50	65	80	100	125	150	200	250	300	350	400	450	500	600
A	170	190	203	229	254	267	292	330	356	381	406	432	457	508
B	16	16	21	22	22.5	23	24.5	26	27.5	29	30	31.5	33	36
H	415	445	540	650	785	830	1040	1300	1460	-----	-----	-----	-----	-----
ØD	50	65	80	100	125	150	200	250	300	350	400	450	500	600
Ød	165	185	200	220	250	285	340	395	445	505	565	615	670	780
PCD	125	145	160	180	210	240	295	350	400	460	515	565	620	725
WHEEL	225	225	225	320	320	320	360	400	400	500	640	720	720	720

# SLUICE VALVE WITH CAP

## MATERIALS

S. No.	Parts	Material	Specification
01	Body	Cast Iron	IS:210 Gr.FG 200
02	Body Seat Ring	Leaded Tin Bronze	IS:318 LTB2
03	Wedge	Cast Iron	IS:210 Gr.FG 200
04	Wedge Ring	Leaded Tin Bronze	IS:318 LTB2
05	Wedge Nut	Leaded Tin Bronze	IS:318 LTB2
06	Gasket	Rubber	IS:638 Type-B
07	Bolts & Nuts	Carbon Steel	IS:1363
08	Bonnet	Cast Iron	IS:210 Gr.FG 200
09	Stem	Stainless Steel	IS:6603 12Cr12
10	Bolts & Nuts	Carbon Steel	IS:1363
11	Gasket	Rubber	IS:638 Type-B
12	Stuffing Box	Cast Iron	IS:210 Gr.FG 200
13	Packing	Asbestos	IS:4687
14	Gland	Cast Iron	IS:210 Gr.FG 200
15	Hand Wheel	Cast Iron	IS:210 Gr.FG 200
16	Washer	Mild Steel	
17	Bolts	Carbon Steel	IS:1363
18	Bolts & Nuts	Carbon Steel	IS:1363



## HYDROSTATIC TEST PRESSURE

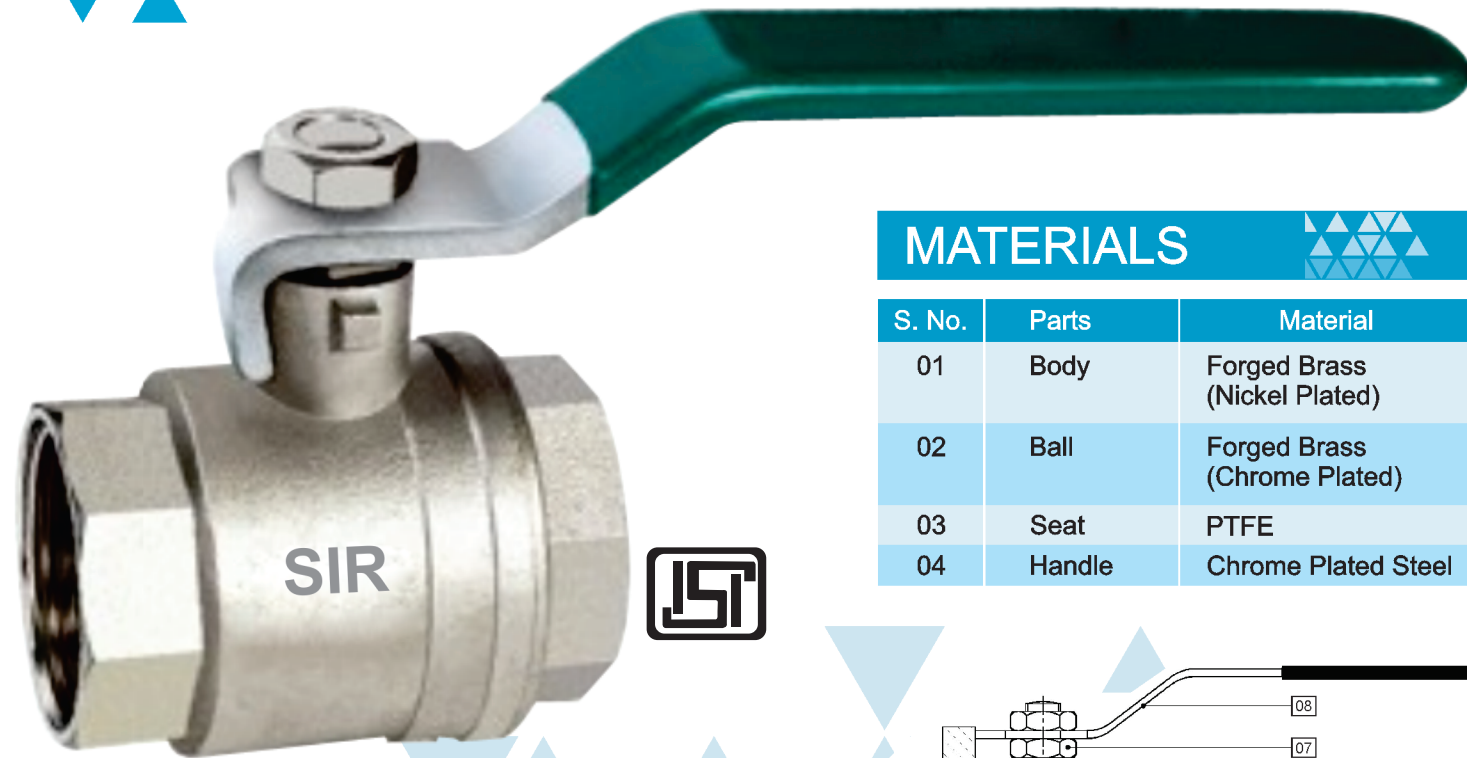
Availability	Size Range	Manufacturing and Pressure Rating	Hydrostatic Test Pressure	
			Body	Seat
Standard Supply	50 to 700 mm	IS:14846 PN 1.0	15 Kg./cm <sup>2</sup>	10 Kg./cm <sup>2</sup>
	50 to 300 mm	IS:14846 PN 1.6	24 Kg./cm <sup>2</sup>	16 Kg./cm <sup>2</sup>



## DIMENSIONS IN MM

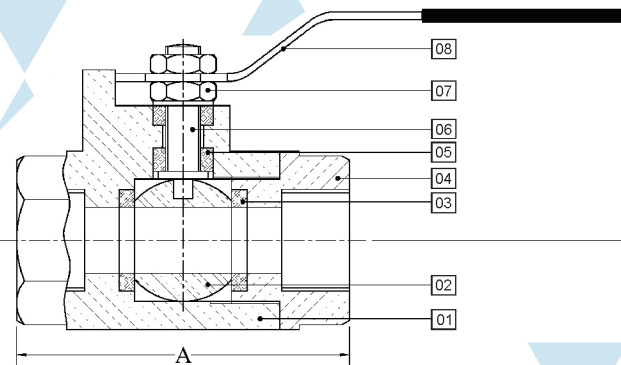
SIZE	50	65	80	100	125	150	200	250	300	350	400	450	500	600
A	170	190	203	229	254	267	292	330	356	381	406	432	457	508
B	16	16	21	22	22.5	23	24.5	26	27.5	29	30	31.5	33	36
H	365	380	425	470	485	595	725	835	910	1020	1110	1200	1300	1500
ØD	50	65	80	100	125	150	200	250	300	350	400	450	500	600
Ød	165	185	200	220	250	285	340	395	445	505	565	615	670	780
PCD	125	145	160	180	210	240	295	350	400	460	515	565	620	725
WHEEL	225	225	225	320	320	320	360	400	400	500	640	720	720	720

# BALL VALVE SCREWED



## MATERIALS

S. No.	Parts	Material
01	Body	Forged Brass (Nickel Plated)
02	Ball	Forged Brass (Chrome Plated)
03	Seat	PTFE
04	Handle	Chrome Plated Steel



## FEATURES

1. Body : Forged Brass Nickel Plated
2. Ball : Forged Brass Chrome Plated
3. Design : Full Bore

## SPECIFICATIONS

Valve Sizes	: DN15-DN 50
Nominal Pressure	: PN32
Medium	: Water/Non Caustic Liquid
Working Temp	: -10°C to 100°C

## DIMENSIONS IN MM

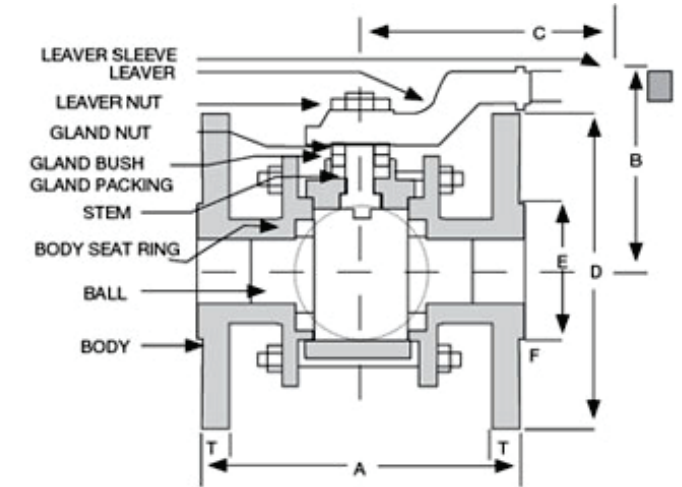
DN Size	Face to Face (A)
15	49
20	56
25	66
32	77
40	87
50	97

# BALL VALVE FLANGED



## MATERIALS

Sr.No	COMPONENT	MATERIAL	SPECIFICATION
01	Body	Cast Iron	IS:210 Gr FG 200
02	Ball	Stainless Steel	AISI-202/304/316
03	Stem & Gland Bush	Stainless Steel	AISI-410/202/304/316
04	Nuts, Stopper, Lever & Studs	Mild Steel	IS:226
05	Spring Washer	Spring Steel	-
06	Handle	S.G.Iron	IS:1865 Gr.450/10
07	Body Seat Rings, Gland Packing & Stem Seal	PTFE	-
08	Lever/Pipe Sleeve	P.V.C.	P.V.C.
09	Gasket	Compressed Asbestos	IS:2712 Gr.C



## DIMENSIONS IN MM

SIZE	A	B*	C*	D	T	E	F
15	120	70	145	95.3	12.8	35	2
20	130	76	145	102	12.8	43	2
25	138	95	156	121	12.8	51	2
32	168	112	76	134	16	63	2
40	175	116	178	140	16	73	3
50	193	135	270	165	19	92	3
65	206	116	354	184	19	105	3
80	218	134	354	203	19	127	3
100	273	205	428	229	24	157	3

